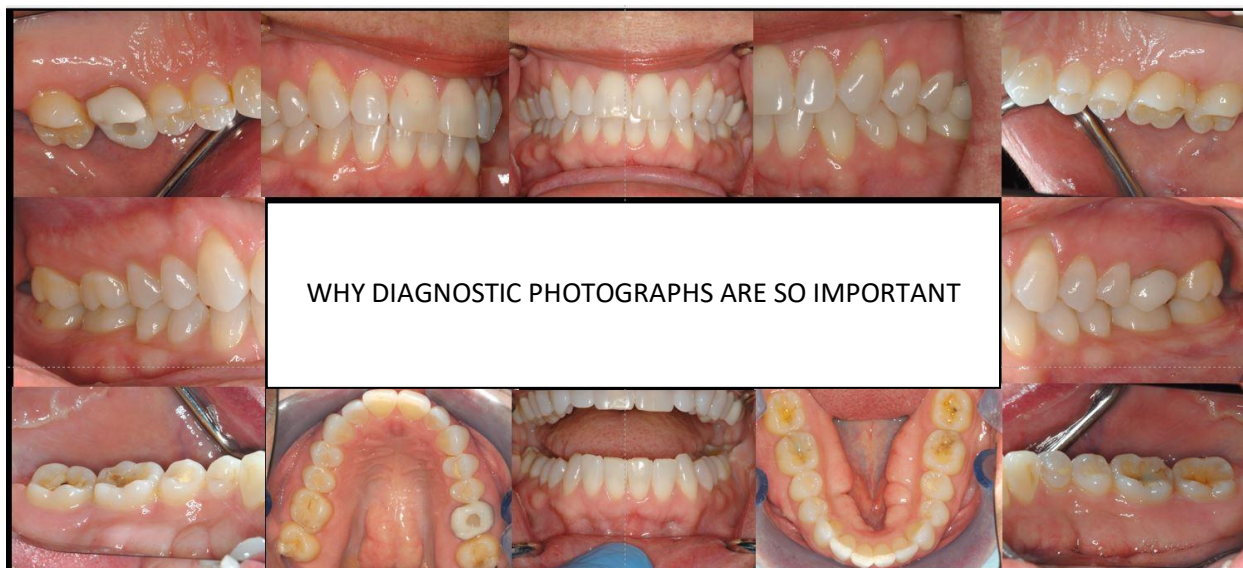


Greg Tarantola DDS

Components Of The Holistic Approach To Dentistry



Xrays are important and necessary but they do not tell the whole story about the teeth, gums and mouth. Close-up, detailed photographs complete the story as they show many things not seen in xrays such as gum condition, inflammation, recession, erosion, condition of fillings, condition of enamel, how the teeth bite, crowding, gumline cavities that are not seen on xrays, etc. It not only helps us make a better diagnosis but also gives us a complete baseline so we have something to compare to at future cleaning appointments. Patients often ask things like – is the recession getting worse?, are my teeth getting more crowded?, are my teeth wearing down more?, is this filling breaking?, etc. Without this baseline, those types of questions cannot be answered correctly. It is always a better diagnosis if there are points in time to compare to see if there are changes. Also with a complete photo series like above, not as many xrays are needed so it is safer.

Just because something is not “perfect” (an old filling, an old crown etc) does not mean it is a “problem”. It may just be an “observation”. A problem is something that needs treatment. An observation may not, it may just need close monitoring and that is what baseline photos help us do.

This is all part of our mission to be as complete and thorough as possible but in the most conservative way.